

V-Uno Firmware Upgrade

REV 0.1

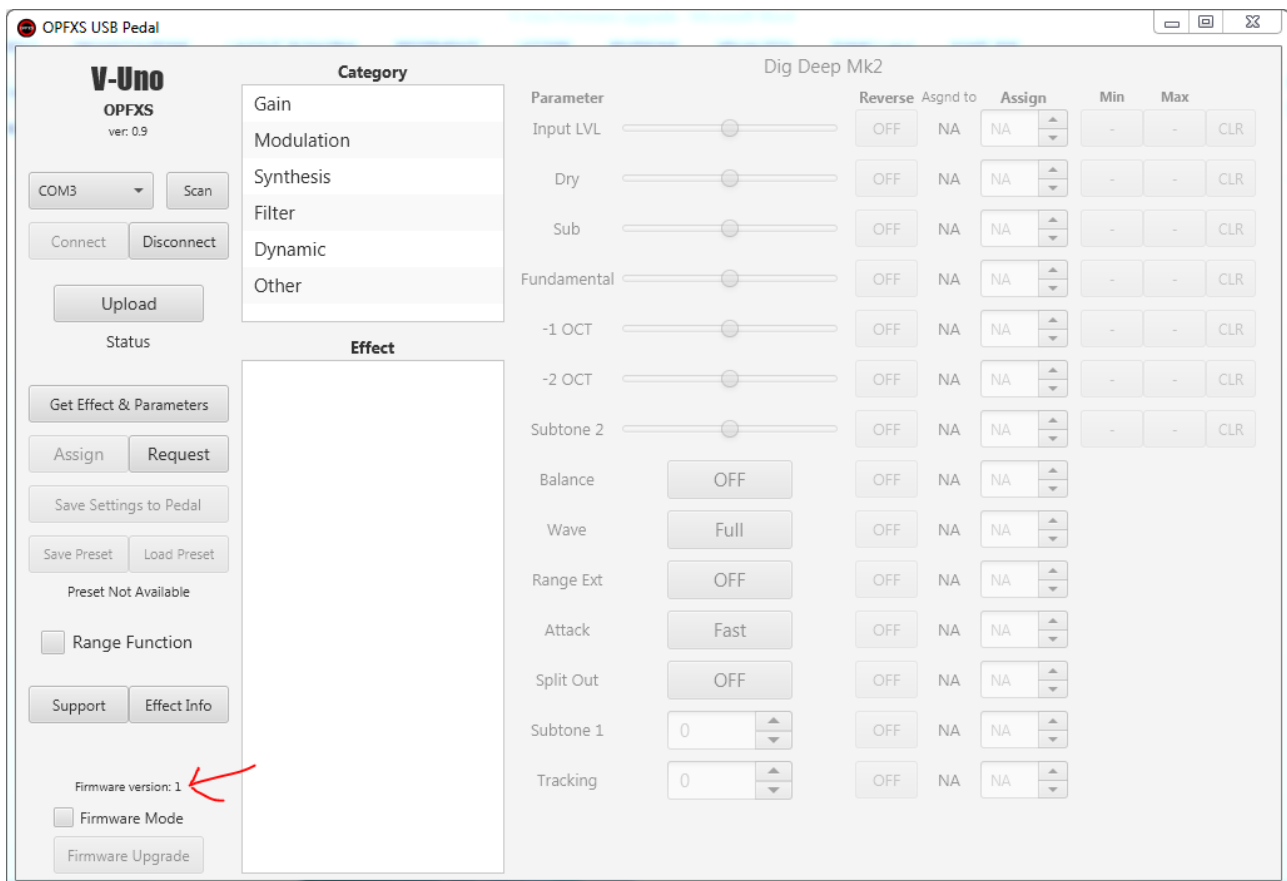
<http://opfxs.com/>

INFO

Starting from software version 0.9 it is possible to upgrade V-Uno firmware to a new version to enable the RANGE function. Upgrading is not mandatory, meaning you can still use all the current and new effects in the same way.

Both firmware versions (*firmware_0* and *firmware_1*) are included, so in case you should find problems with new one you can always go back to the previous firmware.

Starting from Win/Mac software version 0.9 the firmware is shown on the bottom left after clicking on "Get Effect and Parameters". Of course if V-Uno comes with firmware version 1 pre-installed there's no need to flash it again:



FIRMWARE UPGRADE PROCEDURE

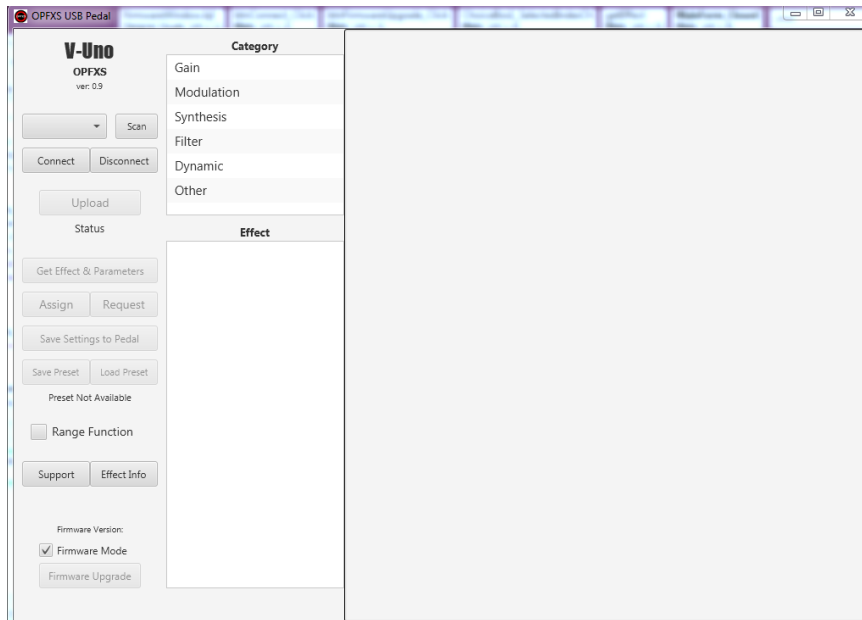
1. Disconnect USB cable and jack DC cable if connected
2. Open the bottom lid of V-Uno by removing the 4 screws
3. Move the internal jumper from BT0-RUN position to BT0-PRG position as shown:



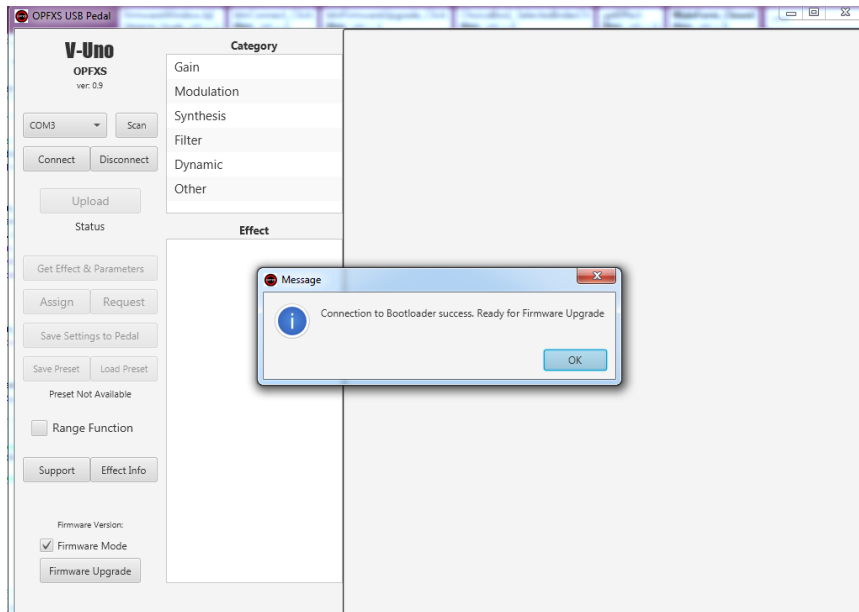
4. Take the 2 jumpers which came with the pedal and place in TX and RX as shown:



5. Now connect the USB cable. All LEDs will be off.
6. Start V-Uno software version 0.9 or above
7. Click on Firmware Mode checkbox

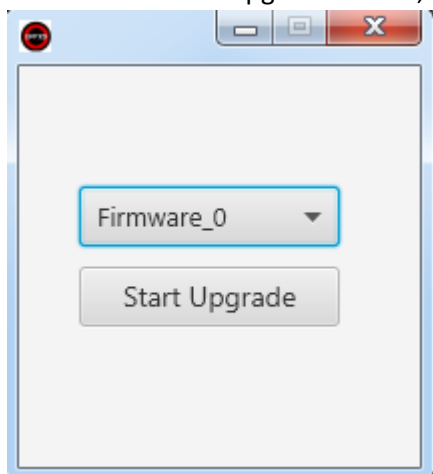


8. Click on port dropdown button and select the appropriate port
9. Click Connect and a success confirmation message should appear:

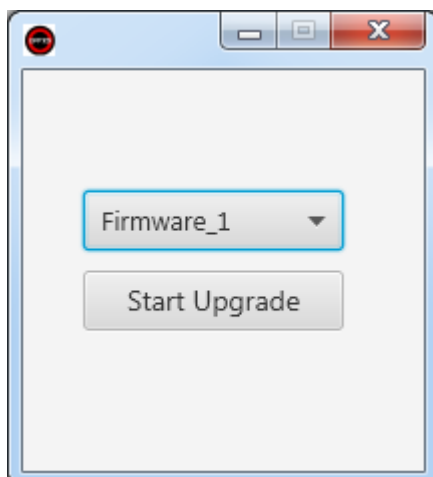


NOTE: if connection to bootloader fails repeat the whole procedure from step 1

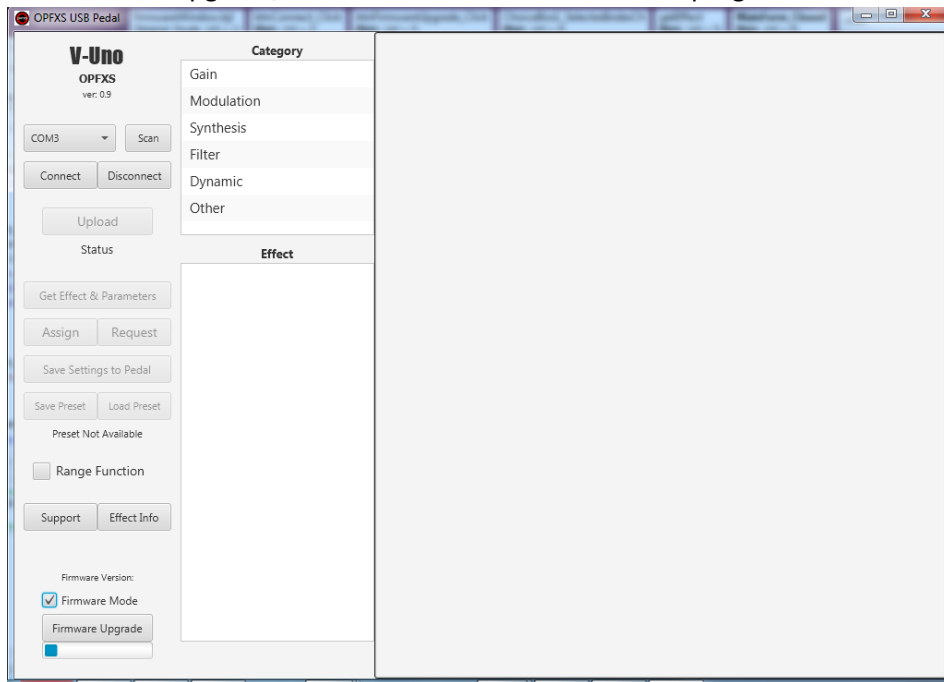
10. Click on Firmware Upgrade button, a new window will appear.



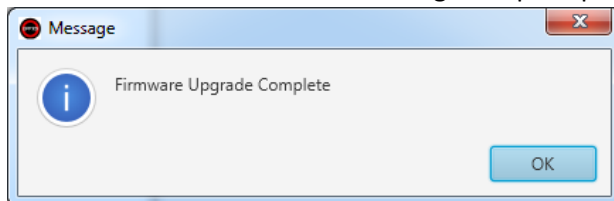
11. Select the firmware from the dropdown menu. Firmware_0 is the original firmware. Firmware_1 is the most recent one:



12. Click on Start Upgrade, the small window will close and a progression bar will appear:



13. Once finished a confirmation message will prompt:



NOTES:

In version 0.9 Firmware_0 is quite fast to upgrade while Firmware_1 takes much more (around 7 minutes)

14. Disconnect the USB cable, remove jumpers from RX and TX. Move the BT0 jumper back to RUN, close V-Uno software and restart it. Connect the USB cable, if everything is well, the LEDs should turn on. Connect the pedal by selecting port and clicking Connect button. Click GET Effect & Parameters and Firmware Version label should indicate the number of new firmware:

Firmware Version: 1

If for any reason the firmware upgrade should fail go back to step 1 and repeat.